

MotionTracking Installation Guide

MotionTracking by
Yannis Kalaidzidis, Alexander Kalaidzidis, Giovanni Marsico, Mikhail Chernykh
1997-2013

Manual by
Yury Bodrov
Last Update: November 6, 2013

1 Installation and Set-Up

1.1 Download and Installation

The current major release of MotionTracking can be found at <http://motiontracking.mpi-cbg.de/get/> in the MotionTracking Installer section. You will be redirected to a site with a setup_x-xx_00.exe which can be downloaded by clicking on it.

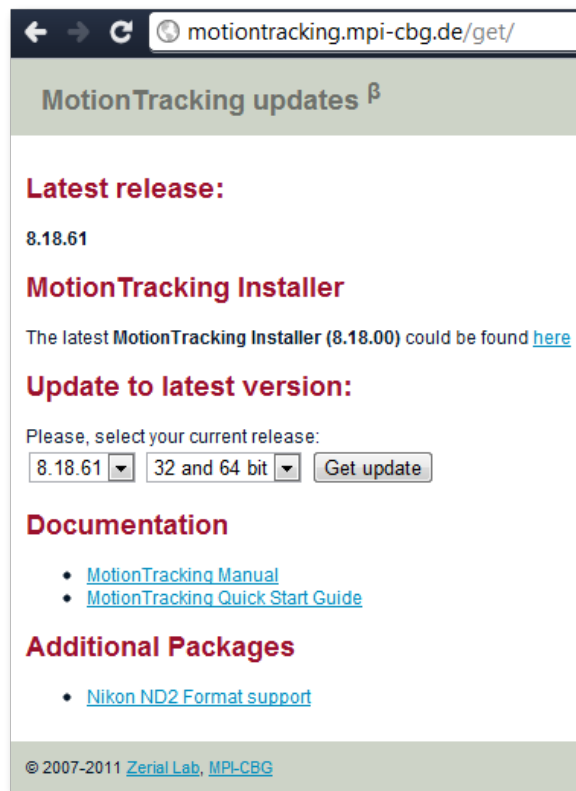


Figure 1: MotionTracking website with download link

To install MotionTracking, execute the downloaded setup.exe. A setup wizard will guide you through the installation.

After accepting the license agreement you will be asked what components you wish to install - you only need the 64 bit version if you run a 64 bit operating system and you can leave it out safely otherwise. If you do not know if you are using 32 or 64 bit you can check by right-clicking on “Computer” in the

“Start Menu” and selecting “Properties”. There you have to look up “System Type” in the “System” section.

Finally you can choose the installation directory where all the data will be placed.

The rest of the installation will be completed automatically.

If you installed both 32 bit and 64 bit versions you can use both versions at any time, but the 64 bit is recommended due to possible high memory demand during complex calculations.

During the first installation the components ExploreDir32 (and possibly ExploreDir64) as well as “Microsoft VS 2008 Redistributable Package” will be installed automatically. They are important for file selection dialogues and need to be installed.

1.2 Program Setup and Database Connection

On the first start of the program you will be asked if you want to connect to a remote database. The database is used to organize project information and a remote one can be used across multiple computers. To connect to a remote database you have to provide the connection information like the network address of the database and the login information. If you select not to connect to a remote database you will be connected to a local database on you machine located in you bin32 directory called MT_DB.mdb. A working connection to either a remote or a local database is necessary to ensure that the program is working properly.

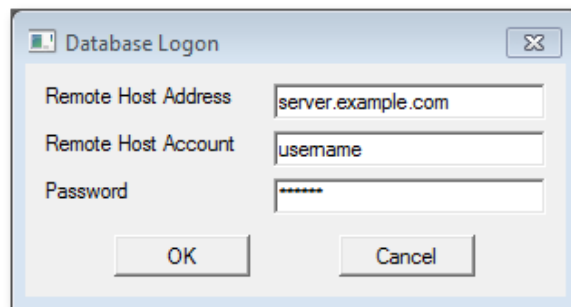


Figure 2: Remote database connection window

In the case that a connection to the remote database is selected but the connection fails you will be automatically connected to the local database. If you connected to local database first you can later connect to a remote one via “File→Database→Connect to Database”

The database you are connected to is named in the header of MotionTracking just after the name and the version. Example: “MotionTracking 8.18.61 (x64), Database: C:/Motiontracking/bin32/MT_DB”. If you are actively using a local database you may want to back up the file from time to time. During re-installation of MT you will also be asked if you want to keep the old database.

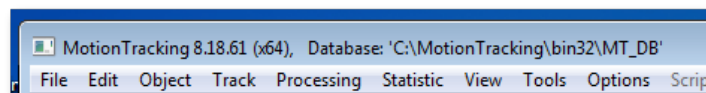


Figure 3: MotionTracking header with version number and database info

After the database connection you will most likely be asked if you want to update MotionTracking, because the setup.exe is only created for major releases and not for every new minor update. After updating, MotionTracking will be ready to use.

1.3 Updates

MotionTracking looks for updates automatically when the program is launched. If new updates are available you will be asked if you want to install them or not. If you decide not to install them the automatic update function will be disabled. You can check for updates manually by clicking Help → Update in the main window menu.

Another option is to download an update package from <http://motiontracking.mpi-cbg.de/get/>. By selecting your current version you will get a download link for a .zip package with all the updated binary files that you need to update to the newest version. To install the update you have to unpack this package in your MotionTracking installation directory and overwrite all older files when asked to do so. This package can also be copied to a different machine as long as the other machine has the same initial older version of MotionTracking.

Note that you must close all running MotionTracking applications and all related processes in the Windows Task Manager → Processes like plbrok.exe, mtupdater.exe, rserver.exe, rdaemon.exe.

This is very useful for users with issues with the automatic update function or computers without direct internet access.

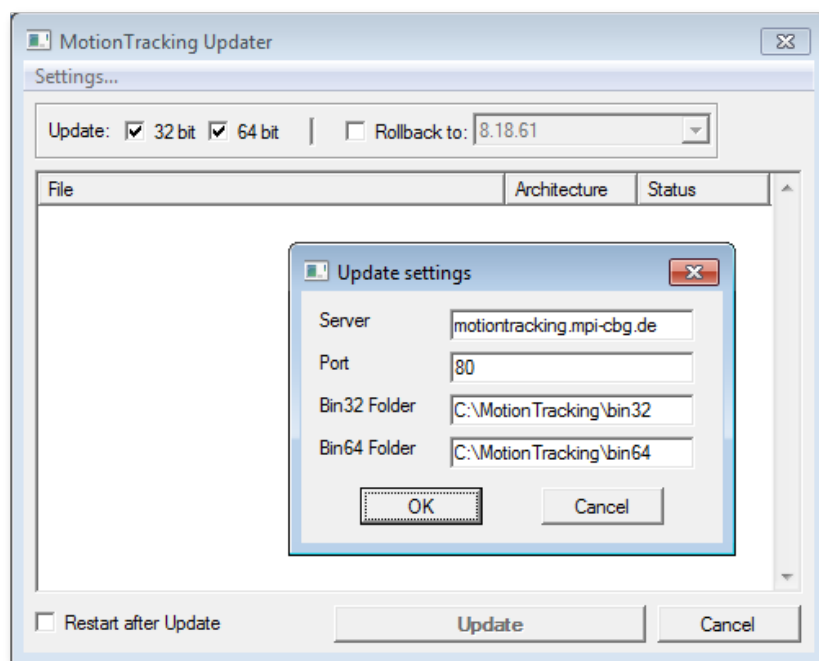


Figure 4: mtupdater.exe with opened settings window

The automatic updating process is handled by “mtupdater.exe” stand-alone updater component which is called via “Help → Update”. From there you can update MotionTracking without having to run MotionTracking itself. You can change the connection settings by clicking on “Settings...” and modify the connection to the update-server which is useful to fix problems with automatic updates.

The default values are “Update Server: motiontracking.mpi-cbg.de” and “Port: 80”. Furthermore the correct installation path should be specified in the “bin32/64 folder” field.

If automatic updates don’t work with these settings the most likely cause is that your connection is blocked by a firewall, please open Port 80 on motiontracking.mpi-cbg.de in the firewall settings.

MotionTracking is in constant development and has important updates and bugfixes at irregular time intervals, therefore it is highly recommended to install all available updates as soon as possible.